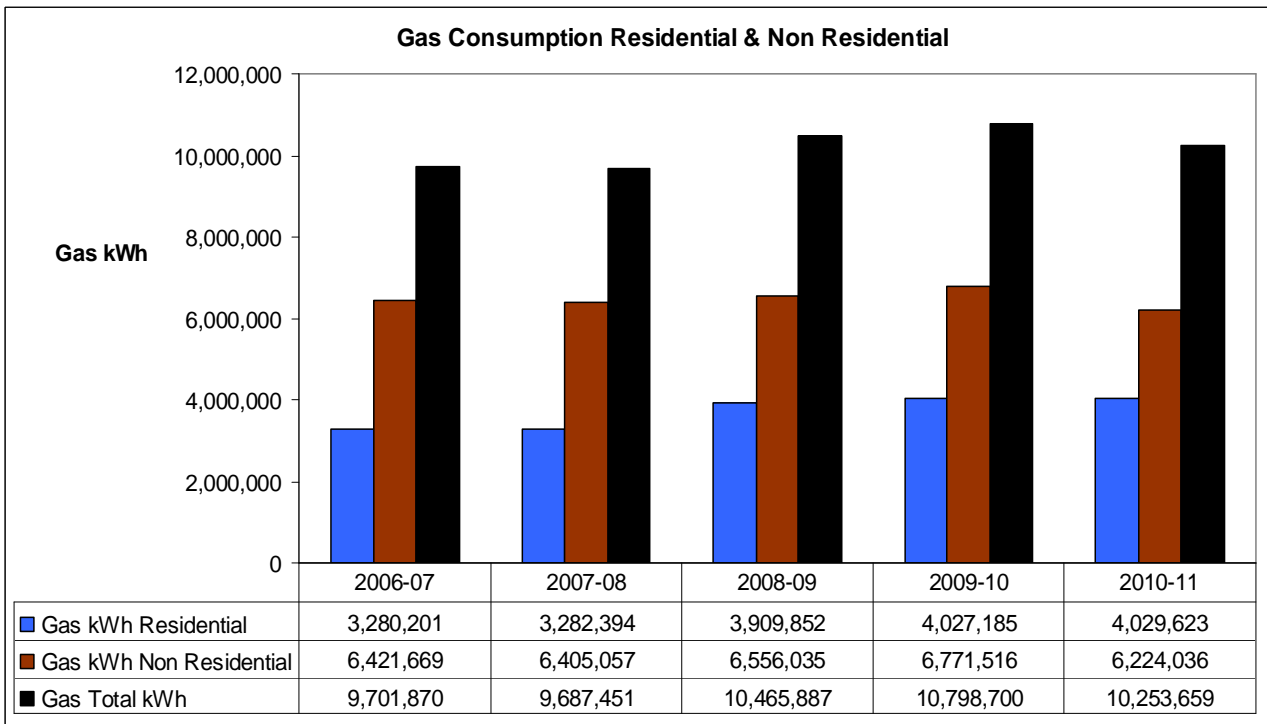
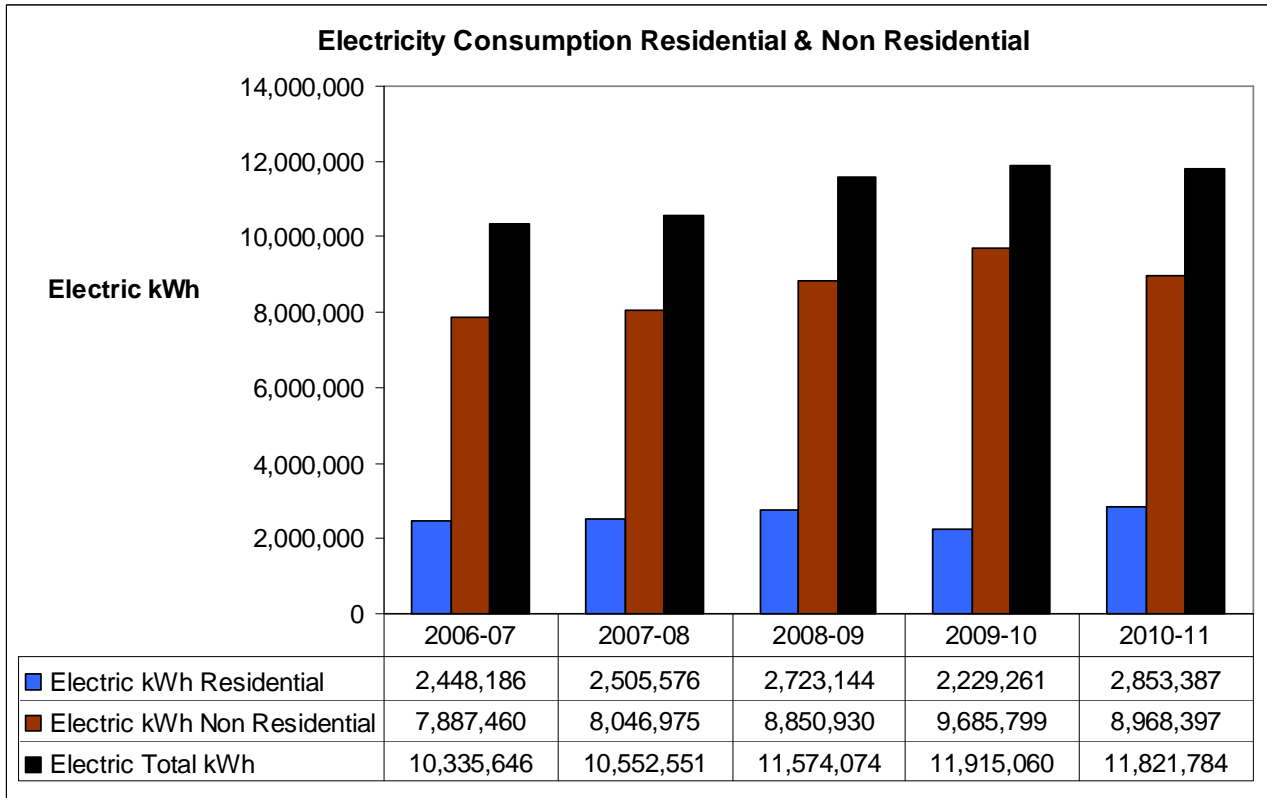
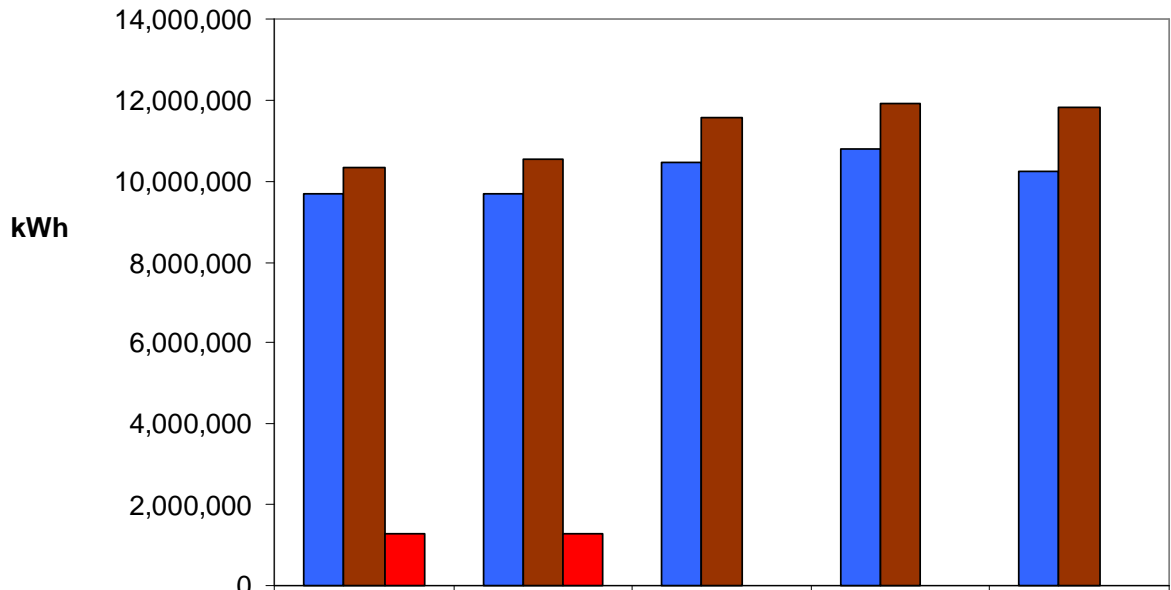


# Electricity and Gas Consumption 2006/07 to 2010/11

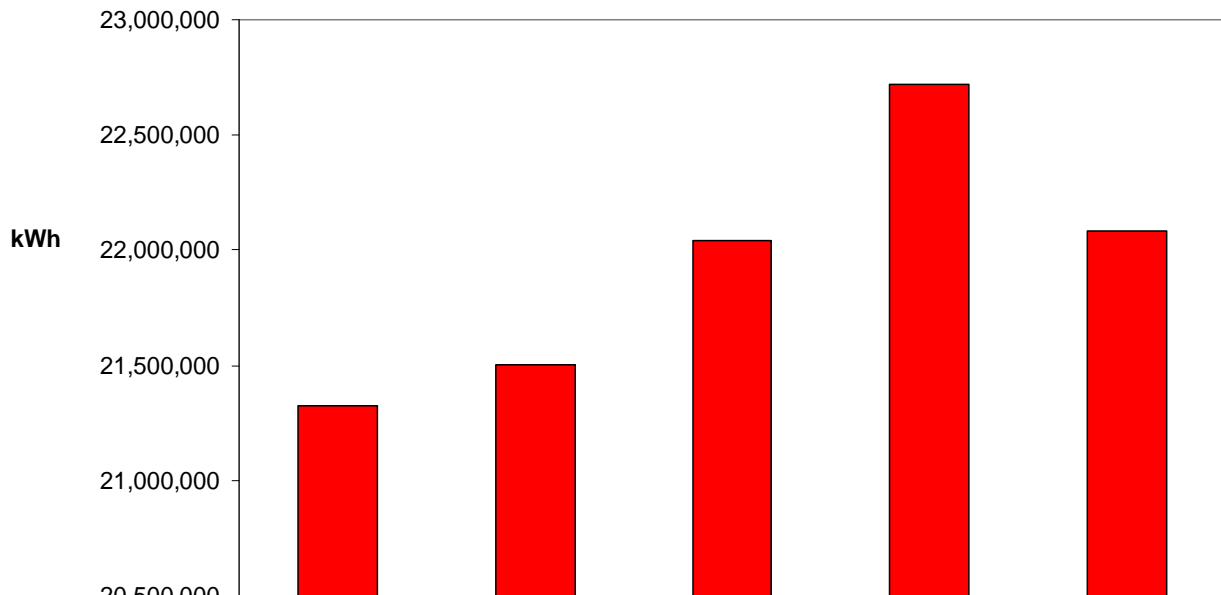


### Total Electricity, Gas & Oil Consumption



	2006-07	2007-08	2008-09	2009-10	2010-11
■ Gas Total kWh	9,701,870	9,687,451	10,465,887	10,798,700	10,253,659
■ Electric Total kWh	10,335,646	10,552,551	11,574,074	11,915,060	11,821,784
■ Oil kWh Non Residential	1,290,020	1,263,732	0	6,196	10,310

### Total Energy



	2006-07	2007-08	2008-09	2009-10	2010-11
■ Total Energy kWh	21,327,536	21,503,734	22,039,961	22,719,957	22,085,753